



STADT
RORSCHACH



FACHSTELLE
GESELLSCHAFT
STADT RORSCHACH



Kanton St.Gallen
Gleichstellungs- und
Integrationsförderung

WELCOME TO THE CITY OF RORSCHACH



WELCOME TO SWITZERLAND

In this brochure we used QR-codes, so you can easily access the websites with your smartphone.
Scan the QR-codes for further information!



CITY ADMINISTRATION RORSCHACH

GEMEINDEHAUS

Town Hall
Hauptstrasse 29
9400 Rorschach

Tel. 071 844 21 11
info@rorschach.ch

Social Services
Kirchstrasse 8
9400 Rorschach

Tel. 071 844 21 96
sozialdienste@rorschach.ch

Office of Technical Services
Promenadenstrasse 74
9400 Rorschach

Tel. 071 844 22 22
infotb@rorschach.ch

Fachstelle Gesellschaft (Community
Department) and
Community Center "tReff"
Feldmühlestrasse 26
9400 Rorschach

Tel. 071 844 22 90 / 079 691 69 22
fsgs@rorschach.ch

Welcome



www.rorschach.ch

LIVING



Meeting your neighbors can help in many ways. You get to meet people, practice speaking German - and in case you're urgently in need of something - they're just a doorbell away.



To live peacefully, every apartment building has its own house rules, e.g. quiet hours and use of the common rooms (entrance area, stairway, laundry room, parking spaces, etc.).



«Hausrat- und Haftpflichtversicherung»

The household insurance covers damages and loss of personal belongings, as well as furnishings. The personal liability insurance covers liability claims of third parties.



«Schlichtungsstelle für Miet- und Pachtverhältnisse»

If there are problems between you and your property owner, the arbitration office for tenancy and lease will counsel you for free.

Tel. 071 844 21 47 / dominik.stillhard@rorschach.ch

WASTE



www.kuh-bag.ch

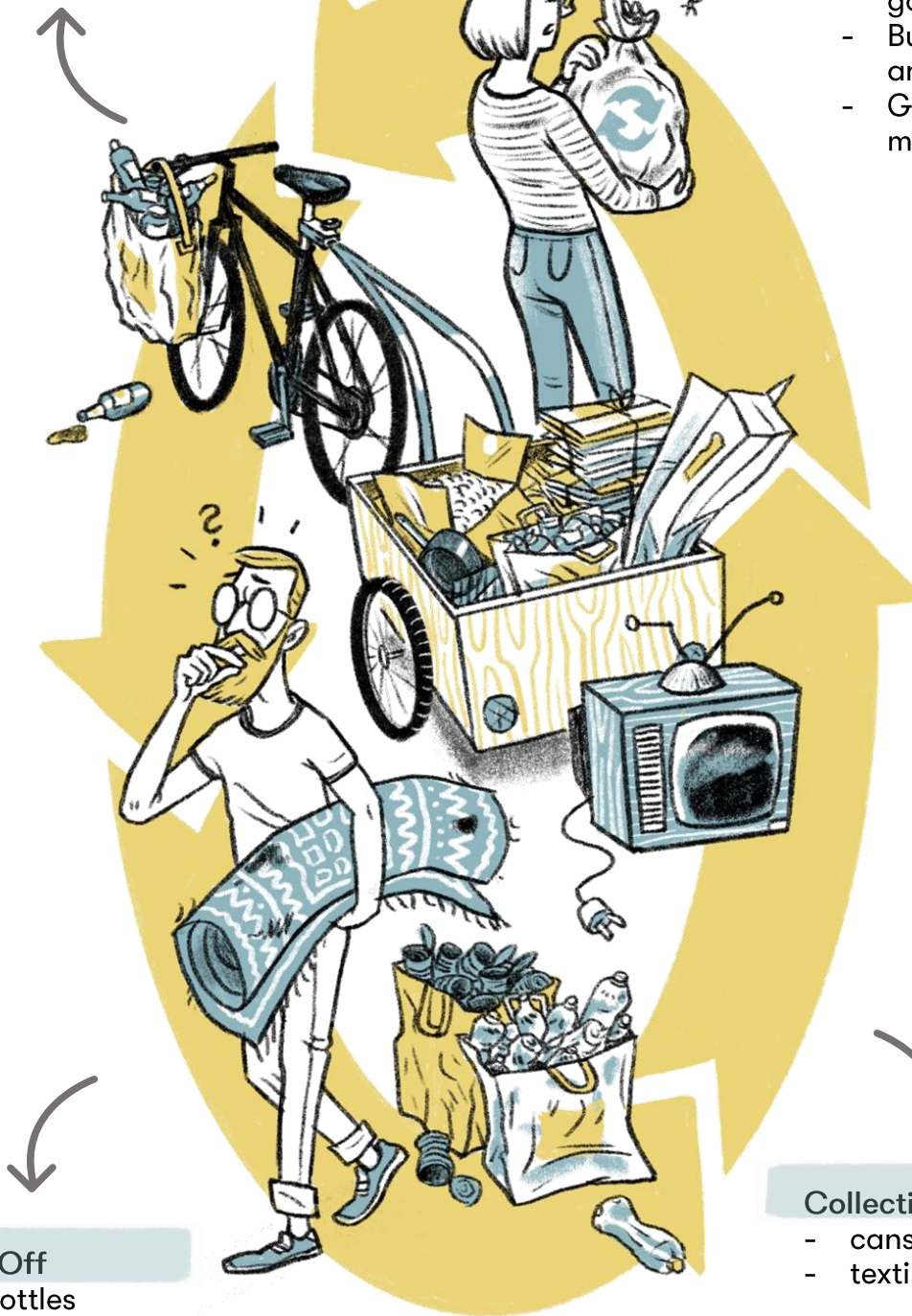
Werkhof recycling center
You can recycle mixed plastics with the taxed Kuh-bag.

Curbside collection

- Garbage in taxed garbage bags
- Bundled waste paper and bundled cardboard
- Green waste and scrap metal



www.a-region.ch



Store Drop-Off

- PET bottles
- milk bottles
- batteries
- expired pharmaceuticals
- aluminum coffee capsules

Collection points

- cans und glass
- textiles and shoes

LANGUAGE

Knowing a language is a first step towards a successful integration and contributes to social cohesion. In Rorschach and most of the regions in Switzerland, people speak German. Here, German is the official language. There are many regional German dialects. In German class, you learn (Swiss) High German, which everyone can speak as well.

In Switzerland, people also speak Italian, French and Romansh, depending on the region they live in. In the western part of Switzerland, French is the official language, while in the south of Switzerland, Italian is the official language. In the canton of Grisons, German and Romansh are the official languages.



At the school in Rorschach, you can take German courses from the language levels A1.1 to B2 at a reasonable price (as of CHF 150.- per semester), childcare included. There are day courses, as well as evening courses and income-related benefits, if you have a low income.

Tel. 071 844 21 81 / schulverwaltung@rorschach.ch



HEALTH CARE



If you have a minor health problem, the first stop is a **pharmacy** or a **drugstore**.



During office hours, **General Practitioners** are the primary health care providers. They play a role in preventing and managing common health conditions, such as illness or accidents.



In case of an emergency, we recommend you go directly to the **Emergency Department** of the nearest hospital (in St. Gallen). They are open 24h a day, 7 days a week, all year.

Emergency medical services	144
Police	117
Fire fighters	118



A **basic health insurance** is **mandatory** for citizens living in Switzerland. People living in modest circumstances can apply for income-related health care benefits, called “individuelle Prämienverbilligung” (IPV).



KIDS, TEENAGERS AND FAMILIES



Youth Center
Reitbahnstrasse 57
9400 Rorschach

076 261 61 68
natascia.perotto@fjfs.ch

Ostschweizer Verein
für das



Family support services
Marienbergstrasse 25
9400 Rorschach

071 227 11 70
info@ovk.ch

Spielgruppe **SEESTERN**
RORSCHACH



- Promenadenstrasse 59a
- Gerenstrasse 14
9400 Rorschach

071 855 74 88
[info@spielgruppe-
rorschach.ch](mailto:info@spielgruppe-rorschach.ch)



Organized family meetings

EIKi-Kafi Chrabbelchäfer, Parent café
by the Evangelical Reformed Church community in Rorschach

Keks und Krümeltreff, Parent café
By the Catholic Church community in Rorschach

Meetings and events at the community center "tReff" at
Feldmühlestrasse 26 in Rorschach, p.e.:

- Women's meeting point (FrauenTreff)
- Coffee meeting point (KaffeeTreff)

FACHSTELLE
JUGEND
FAMILIE
SCHULE

Family Counseling
Reitbahnstrasse 57
9400 Rorschach

071 844 49 00
daniela.eugster@fjfs.ch

LEISURE AND CLUBS

By joining a club or an organization, you can meet people and feel a sense of community.



There are different kinds of clubs and organizations in Rorschach: Sports clubs, cultural organizations, social organizations, political organizations, etc.



SCHOOL, VOCATIONAL AND FURTHER EDUCATION



In the Swiss school system, there are 11 years of compulsory education. It is free for every child and consists of kindergarden (2 years), primary school (6 years) and secondary school (2 or 3 years).

Parents can show their children that they take interest in their education by seeing to their needs, helping them when required, and or asking the teacher if something is unclear.



www.schulerorschach.ch

If you need help choosing, changing, or leaving a career, the **vocational, study, and career guidance center** can help you find your next step in your professional life.

«Berufs-, Studien- und Laufbahnberatung»



www.sg.ch



The State Secretariat for Education and Research is responsible for the formal recognition of foreign diplomas.

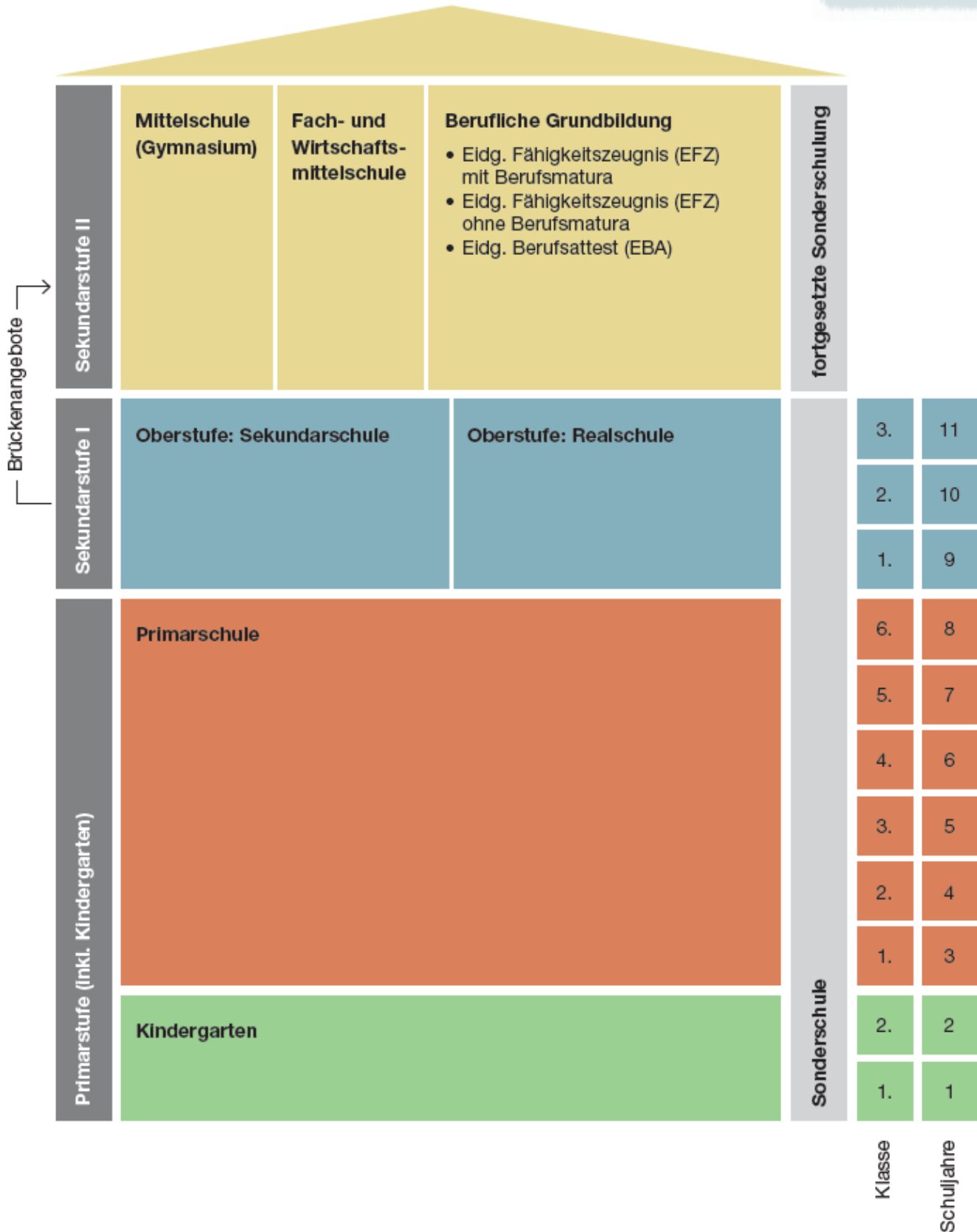
«Staatssekretariat für Bildung, Forschung und Innovation» (SBFI)



www.sbfi.admin.ch

SWISS EDUCATION SYSTEM

In Switzerland, having a good education and a job are considered important.



WORK



Most of the Social Security contributions are deducted directly from the monthly salary. Self-employed people and unemployed people, make these contributions directly to the Social Security office SVA.

If you are employed more than 8 hours per week, your employer is responsible to insure you for accidents at work, as well as accidents outside of work. Self-employed and unemployed people, are required to register for an accident insurance at an insurance company, e.g. their health insurance company.

«Regionales
Arbeitsvermittlungszentrum»

If you lose your job or are looking for one, you can register at the Regional Employment Center (RAV) in Heerbrugg.

At RAV, they can council you on how to find a new job. If you have worked a minimum of 12 months in Switzerland or an EU/EFTA country (including social security contributions), you will receive unemployment benefits.



As a holder of a residency permit B, you are required to support yourself financially. If you apply for welfare and become indebted, it can affect your residency permit. Depending on the amount, the indebtment might even result in a withdrawal of your residency permit.

COMMUNITY

Switzerland consists of 26 independent cantons.

There are federal, cantonal, and communal laws. Many laws vary from canton to canton.

State responsibilities are shared by the federal state, cantons, and communities alike.



If you're in need of legal advice, but can't afford a lawyer, there is free legal counseling. It is offered in St.Gallen, Altstätten, Buchs, etc., without prior registration.

«unentgeltliche Rechtsauskunft»



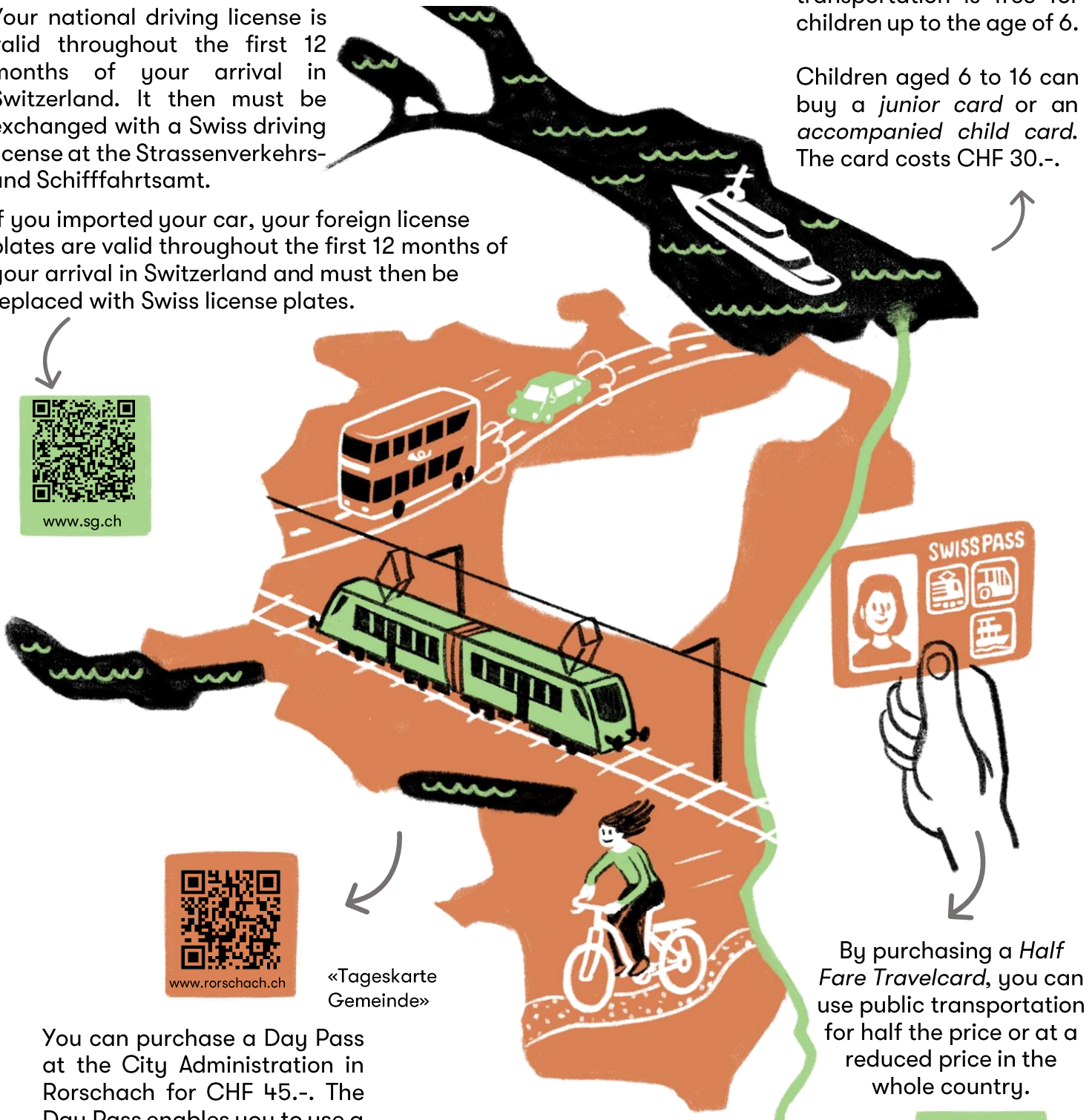
TRANSPORTATION

Your national driving license is valid throughout the first 12 months of your arrival in Switzerland. It then must be exchanged with a Swiss driving license at the Strassenverkehrs- und Schifffahrtsamt.

If you imported your car, your foreign license plates are valid throughout the first 12 months of your arrival in Switzerland and must then be replaced with Swiss license plates.

In Switzerland, public transportation is free for children up to the age of 6.

Children aged 6 to 16 can buy a *junior card* or an *accompanied child card*. The card costs CHF 30.-.



www.sg.ch



www.rorschach.ch

«Tageskarte Gemeinde»

You can purchase a Day Pass at the City Administration in Rorschach for CHF 45.-. The Day Pass enables you to use a wide range of public transportation in Switzerland (e.g. bus, train, boat, tram, etc.).

By purchasing a *Half Fare Travelcard*, you can use public transportation for half the price or at a reduced price in the whole country.

«Halbtax-Abonnement»



www.sbb.ch

POLITICAL SYSTEM

Swiss citizens have the right to vote.
They can vote on the constitution, federal bills, laws, the cantonal and communal parliament, or city council.

Equal rights and social justice for all citizens.



Right to participate.

All residents of Rorschach have the right to submit a petition to the city council of Rorschach.

A petition is a formal request, recommendation, criticism, or complaint about something you deem worthy of change. You can submit the petition at the City Administration after collecting signatures.

THANK YOU FOR YOUR TIME

If you have any questions, don't hesitate to contact us.

At the Fachstelle Gesellschaft, Rorschach's counselling service and community center, we are happy to help with questions regarding integration, German courses, and life in Rorschach.



STADT
RORSCHACH



FACHSTELLE
GESELLSCHAFT
STADT RORSCHACH

Community Center "tReff"
Feldmühlestrasse 26, 9400 Rorschach
Telefon 071 844 22 90, Mobile 079 691 69 22
fsgs@rorschach.ch, www.fsgs-rorschach.ch

Office Hours
Mon 2 - 6 pm, Wed and Thurs 9 - 12 am



Illustrations: Jonathan Németh